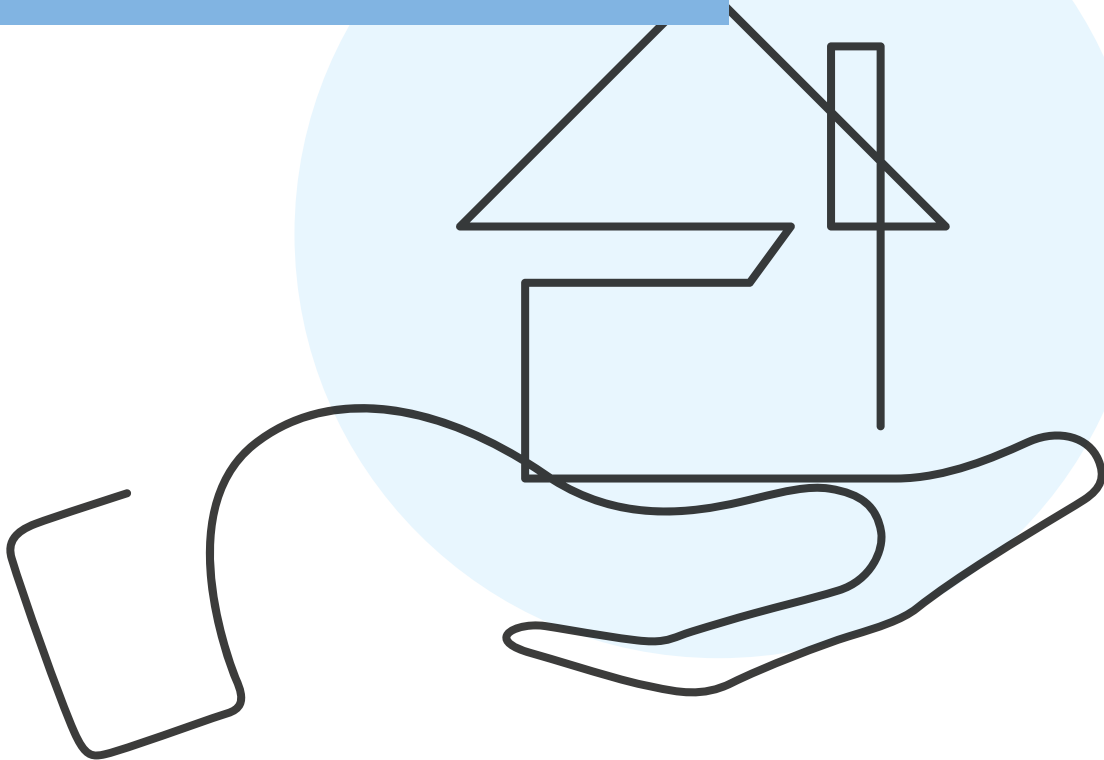


Be a smart prosumer



Snocu DIN is the first independent device, able to communicate with the inverter, the battery storage system, the heat pump and the EV charge station developed to create an [Energy Community](#).

DIN

Dim. mm: 71,3 x 90,5 x 62

Poles on DIN rail: 6 SU

Power supply: external on DIN rail with clamps

Requirements: ethernet line or WiFi with supported protocol; circuit breaker next to the power supply

Included accessories: power supply with DC cable; ethernet cable

Fuses: T2A / L250V

Circuit breaker: C16/32 - D16/51

DIN bracket: EN 50022 35 x 15

Protection rate: IP20

Operating voltage AC: INPUT
100 — 240VAC 0.5A 50/60Hz
OUTPUT 5 V 2.4A

Operating voltage DC: 5 V

Operating frequency: 50 — 60 Hz

Operating temperature:

-10° C — +40° C

Connectivity:

Ethernet 10/100 baseT;

Wifi IEEE 802.11 b/g/n;

Bluetooth 4.1 (classic e LE)

Ports: 1 HDMI; 4 USB 2.0; 1 LAN

SNOUCU is available in the DIN version and will turn any consumer into an evolved prosumer.

